



CD95F

MOTOR PROTECTOR

● OPERATION

CD95F thermal protector operates with bimetal disc 'snap action' by sensing the current and heat on the motor. The bimetal disc trips off and disconnects the current path when the temperature reaches the desired temperature. The protector then resets automatically when the temperature returns to a normal range.



● SPECIAL FEATURE

CD95F carries a resistive wire that provides extra current sensitivity. It can protect motors with current lower than 5A.

● OPTION

- Leads: type and length
- Insulation sleeve: type and length
- Terminations: in same or opposite direction

● OUR STRENGTH and SERVICE

- Trip-off temperature ranges from 50 to 170 degree Celsius. We would be glad to help customer to select the suitable temperature of the protector.
- Customer can choose the suitable current and trip-off time.
- We provide installation of leads and insulation sleeve, and even heat-shrink service for the sleeve.



Chwen-Der Thermostat

MODEL DEFINITION FOR CD95F

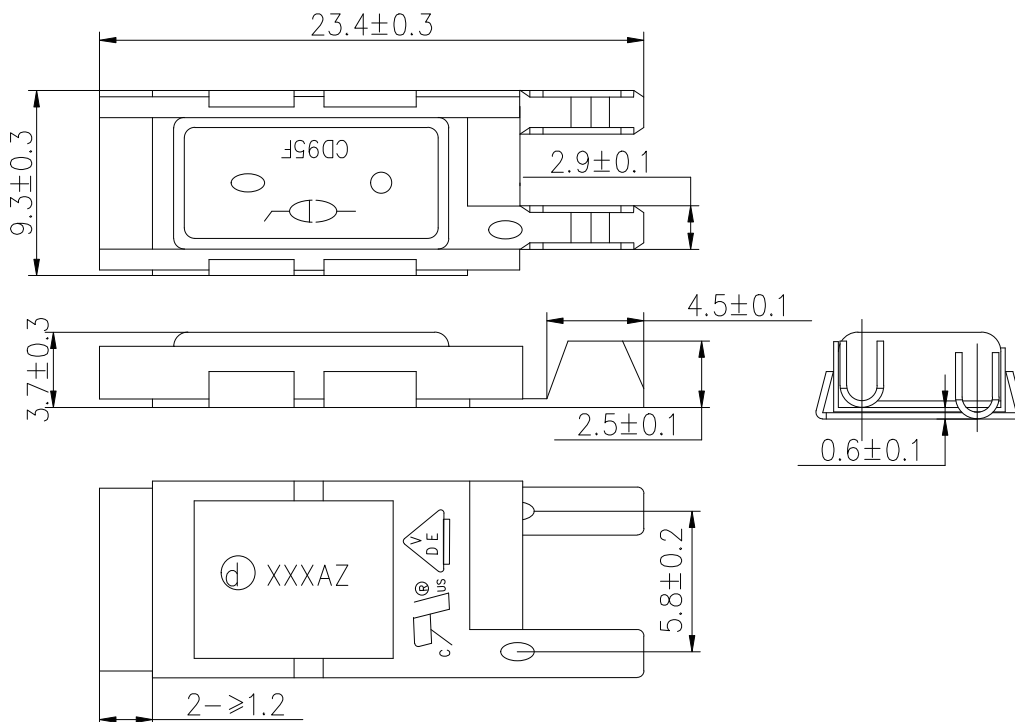
CD	95F	XXX	A	Z	1	*												
Abbreviation Of Company Name	Basic Model Designation	Trip-off Temperature	Terminal Construction	Terminal Shape	Housing and plate Material	Customer Code												
		50 - 170°C	<table border="1"> <tr> <td>A</td> <td>Same End</td> </tr> <tr> <td>B</td> <td>Opposite</td> </tr> </table>	A	Same End	B	Opposite	<table border="1"> <tr> <td>Z</td> <td>Bent</td> </tr> <tr> <td>Y</td> <td>Flat</td> </tr> </table>	Z	Bent	Y	Flat	<table border="1"> <tr> <td>Blank</td> <td>Old Material</td> </tr> <tr> <td>1</td> <td>Stainless Iron</td> </tr> </table>	Blank	Old Material	1	Stainless Iron	Could be no suffix or letter A-Z or 1-9
A	Same End																	
B	Opposite																	
Z	Bent																	
Y	Flat																	
Blank	Old Material																	
1	Stainless Iron																	

SPECIFICATIONS

Approval	Rated Voltage	Certificate
UL	120VAC 24VDC	E305410
VDE	250VAC 24VDC	40019930

DIMENSIONS (MM)

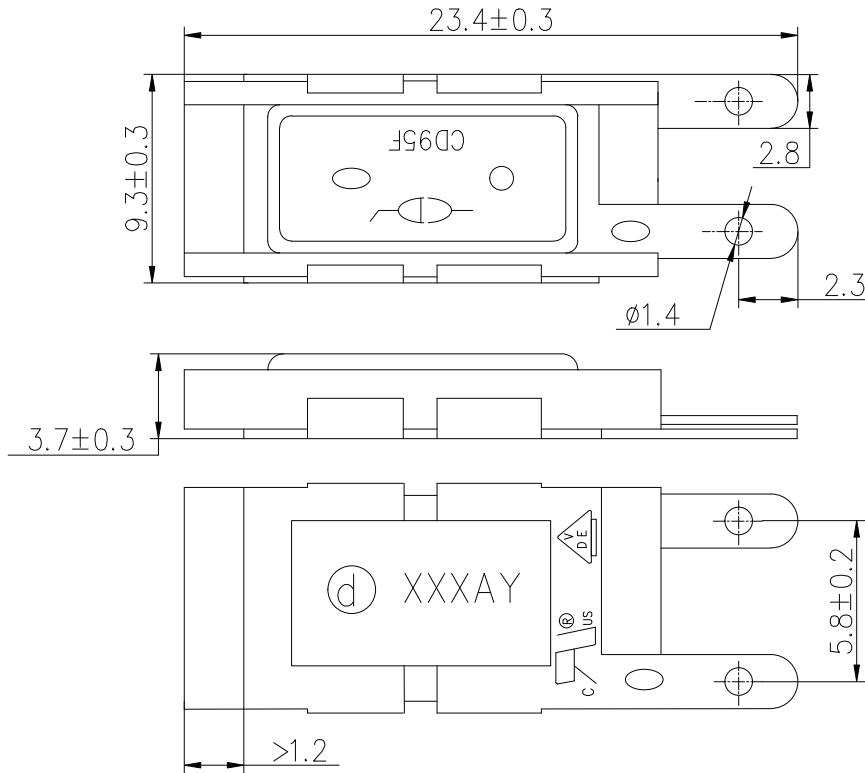
CD95FXXXAZ





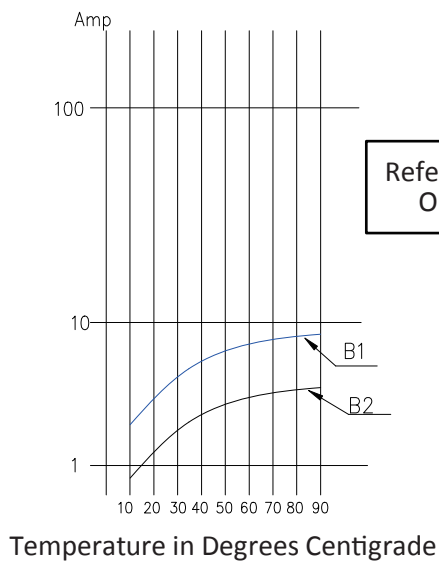
Chwen-Der Thermostat

CD95FXXXAY

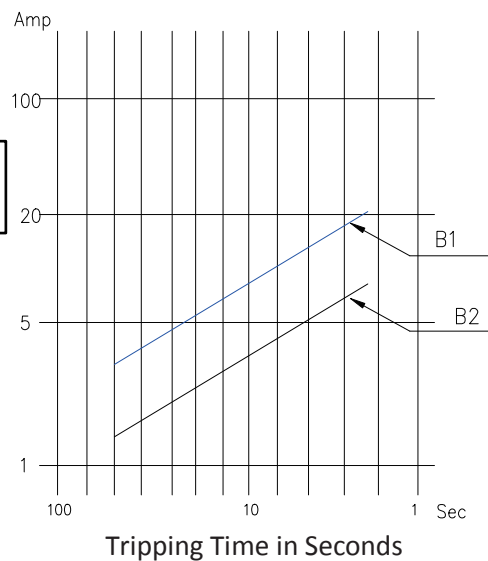


• TEMPERATURE-CURRENT-TRIPPING TIME CURVE

Ultimate Trip Current
VS.
Protector Ambient Temperature
(Approximate: to be used
for selecting samples only)



Average First Cycle Tripping Time
VS.
Current in 25°C Ambient
(Approximate: to be used for selecting
samples only)



• NOTE:

Don't soak it into the insulating paint or other liquids